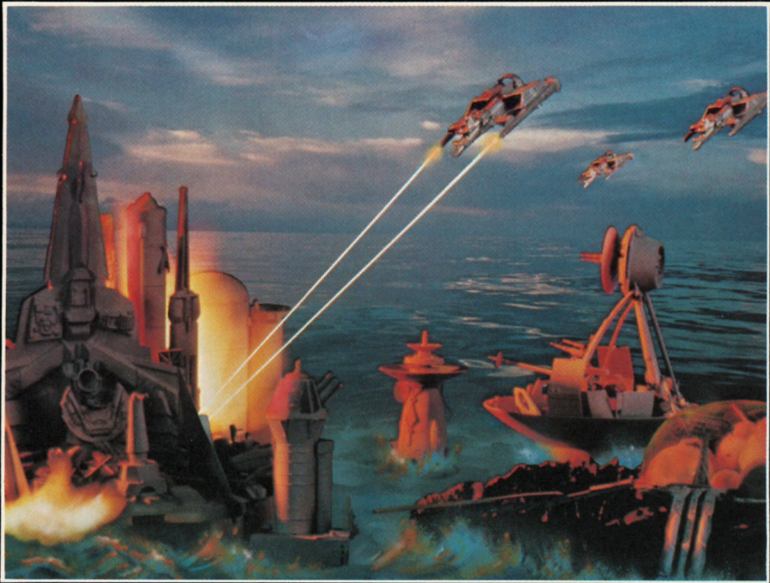


# ATLANTIS

## GAME PROGRAM INSTRUCTIONS



The ancient city of Atlantis, a city beneath the sea, a civilization greater than any the world has ever seen...

One day a low drone is heard throughout the ocean metropolis. The stars go out. Gorgon vessels fill the sky, pounding the city mercilessly. A cry reaches every citizen –

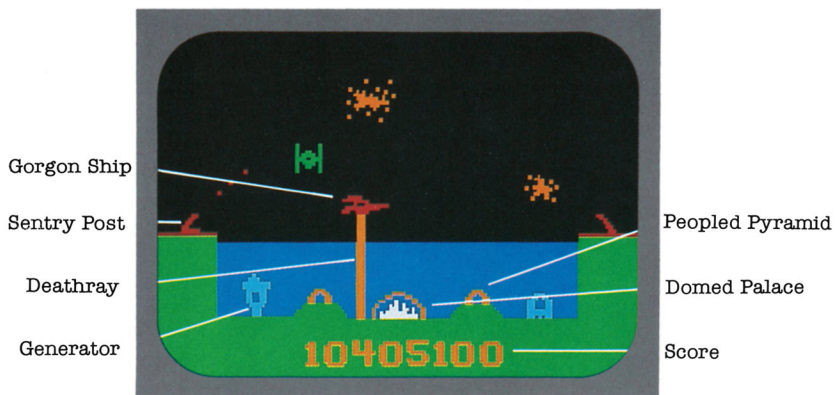
“Defend Atlantis – before it becomes a watery grave!”

## Game Objective

Defend Atlantis! Blast Gorgon vessels before they come close enough to demolish Atlantis with the deathray. Score big and you can rebuild a portion of the city the Gorgons have demolished.

Game ends when all six sections of Atlantis have been leveled.

### Atlantis is a 1-Player Game



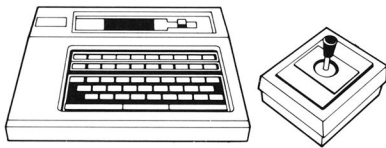
- ★ Insert cartridge, with label facing the keyboard, into the slot on the computer console. Turn power **on**.
- ★ Use the left joystick controller.
  - ★ Position controller so that the red firing button rests in the upper left corner.





## Pick Your Game

- ★ When the Imagic logo and Atlantis game screen appear, select one of four skill levels with the left joystick controller.
- ★ The more advanced the skill level, the faster the Gorgon ships fly.
- ★ Easy: lean joystick right, or simply press red firing button.
- ★ Medium: push joystick away from you.
- ★ Hard: lean joystick left.
- ★ Expert: pull joystick toward you.
  - ★ Skill level appears in place of the Imagic logo.
- ★ To begin action, press red firing button.
- ★ To play at the same skill level again after a game ends, press the red button on the left controller.
- ★ To select a new game, press **RESET** and pick the desired skill level.



## Game Play

You command the two Atlantean sentry posts with your left joystick controller.

- ★ A sentry post guards either side of the city. They cannot be destroyed.
  - ★ To fire from left or right sentry posts, lean joystick left or right.
- ★ Press red firing button.
- ★ Once a sentry post has been selected for fire, it remains selected after the joystick is released.
- ★ To fire from selected sentry post: press red button.
- ★ To select other sentry post: press joystick in that direction.
- ★ The Domed Palace projects a powerful force field that protects the other four Atlantean installations. As a result, the Gorgon deathray must demolish the dome and then the Palace before the rest of Atlantis becomes vulnerable to attack.

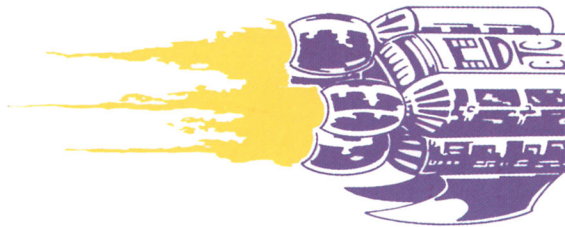
## Secret Weapon

When things look desperately bad for the Atlantean defenders, a secret weapon can help even the odds! Destroy a sky full of Gorgon ships by unleashing the Blitz Bomb!

- ★ To fire Blitz Bomb: push joystick forward.
  - ★ Gorgon vessels will instantly disintegrate!

Don't be impulsive! You receive only one Blitz Bomb per wave. Listen for the 8 beeps that tell you when a wave ends.





## Scoring

You score each time you vaporize a Gorgon vessel. You must hit the ship directly to score.

Destroy a Gorgon ship: 250 points

- ★ At the end of a wave, you receive 1000 points for each part of Atlantis that survives the Gorgon assault.
- ★ If the Gorgon deathray damages or destroys the Domed Palace, a new one can replace it at the end of the current wave. You earn a bonus Domed Palace:

At every 10,000 point mark you reach up to 100,000

AND THEN

At every 100,000 point mark up to 1,000,000

A damaged or destroyed Domed Palace is only replaced at the end of a wave. Should the entire city be leveled before the end of a wave, no new Domed Palace appears. The game ends.

- ★ You earn no points for Gorgon ships destroyed with the Blitz Bomb.



## IMAGIC VIDEO GAME CARTRIDGE TWO YEAR LIMITED WARRANTY

Imagic warrants to the original consumer purchaser of this Imagic video game cartridge that it will be free from defects in materials and workmanship for TWO YEARS from the date of purchase. If this cartridge is discovered to be defective within the warranty period, Imagic, at its option, will either repair or replace this cartridge free of charge, upon receipt of the cartridge, postage prepaid, with proof of date of purchase, at the following location:

### IMAGIC

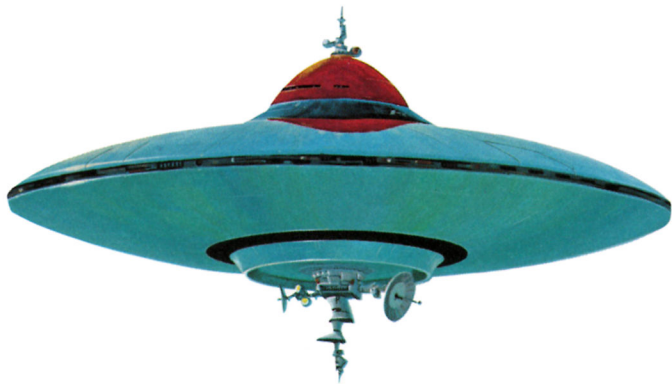
Consumer Affairs  
981 University Avenue  
Los Gatos, CA 95030

This warranty is limited to electronic and mechanical parts contained within the cartridge. It is not applicable to normal wear and tear and is not applicable and shall be void if the defect has arisen through, or the cartridge shows signs of, misuse, excessive wear, modifications, or tampering.

THIS WARRANTY IS IN LIEU OF ALL OTHER EXPRESS WARRANTIES OR REPRESENTATIONS. ANY APPLICABLE IMPLIED WARRANTIES, INCLUDING WARRANTIES OF MERCHANTABILITY AND FITNESS, ARE LIMITED TO A PERIOD OF TWO YEARS FROM THE DATE OF PURCHASE. IMAGIC IS NOT LIABLE FOR ANY SPECIAL, INCIDENTAL, OR CONSEQUENTIAL DAMAGES RESULTING FROM BREACH OF ANY EXPRESS OR IMPLIED WARRANTIES ON THIS CARTRIDGE.

Some states do not allow limitations on how long an implied warranty lasts or the exclusion or limitation of incidental or consequential damages, so the limitations or exclusions set forth above may not apply to you. This warranty gives you specific legal rights, and you may also have other rights which vary from state to state.





**IMAGIC**



Game Program designed by Jeff Ronne

Screen Graphics assisted by Michael Becker

**IMAGIC**

Consumer Affairs  
Kathleen Boothe  
P.O. Box 31001  
Los Gatos, CA 95031

© 1983 IMAGIC  
All Rights Reserved

700076-1 Rev. A  
Printed in USA